

Series Introduction

A Series: This series cannot withstand bending moments. It can neither be straddle nor cantilever mounted and can only provide torque in the form of shaft output.

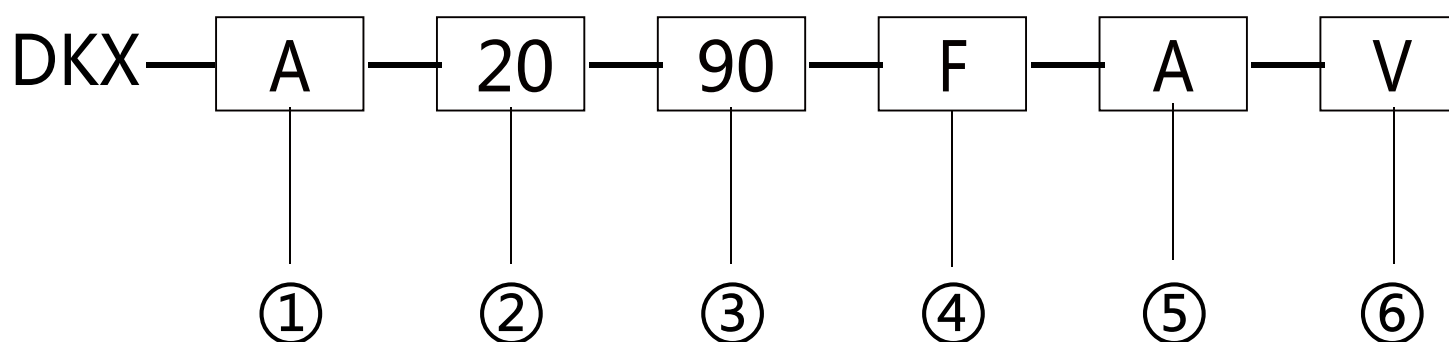
B Series: This series can withstand certain bending moments and can be either straddle or cantilever mounted and used by light-duty mechanical equipment.

C Series: This series can withstand bending moments, have a compact axial structure and can be cantilever mounted.

D Series: This series can withstand large bending moments and can be either straddle or cantilever mounted and used by heavy-duty mechanical equipment.

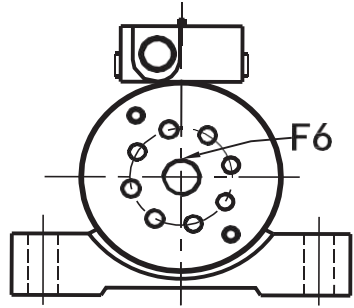
E Series: This series is a hydraulically controlled valve actuator that cannot withstand bending moments and is mainly used for performing the switching action of the valve.

Model Description

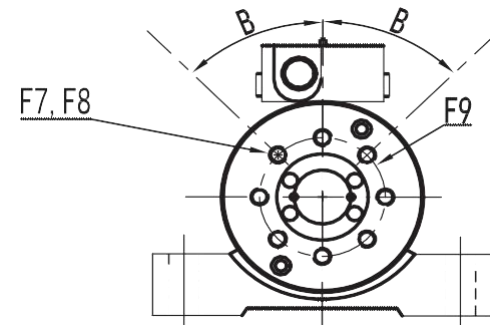


①	Series No. of rotary actuator	A	B	C	D	E
②	Model	20 , 35 , 65 , 135 , 200 , 250 , 560 , 800 , 1200 , 2200	50 , 95 , 180 , 280 , 300 , 450 , 580	20 , 30 , 60 , 100 , 160 , 280	200 , 280 , 300 , 470 , 500 , 750 , 1000 , 1150 , 1400 , 1800 , 2500 , 4200	12 , 25 , 50 , 100 , 200 , 400 , 800 , 1600 , 3200
③	Rotation angle	90=90° 180=180° 270=270° 360=360°				
④	Mounting type of actuator body	F= Flange mounting D=Foot mounting G= Actuator body mounting				
⑤	Torque output forms	A= Single shaft spline B= Internal jack C= Double flange S= Single flange Y= Double-shaft spline				
⑥	Accessories	V= Balance valve R= Overflow valve B= Cushion valve				
Note:	I . The rotary actuator can be installed with an angle encoder. Please specify if necessary; II . Special rotary actuators (non-standard rotation angle, torque and mounting type) can be customized; III. The models of telescopic linear rotary actuators and excavator-specific rotary actuators are not included in this table. Please contact Shanghai Dunke Machinery Co., Ltd. if necessary.					

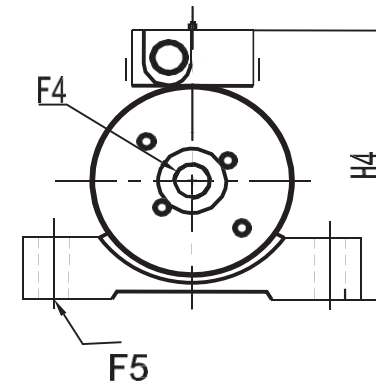
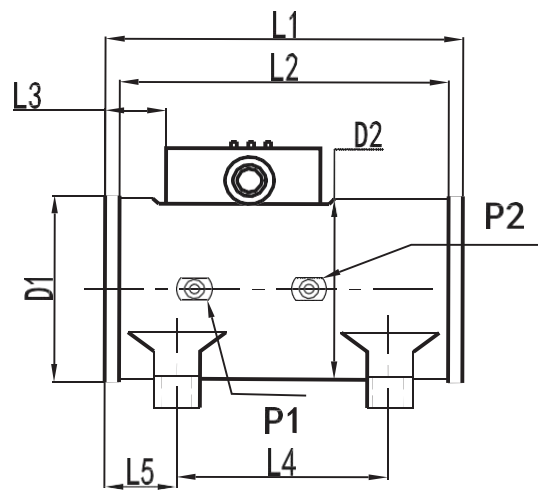
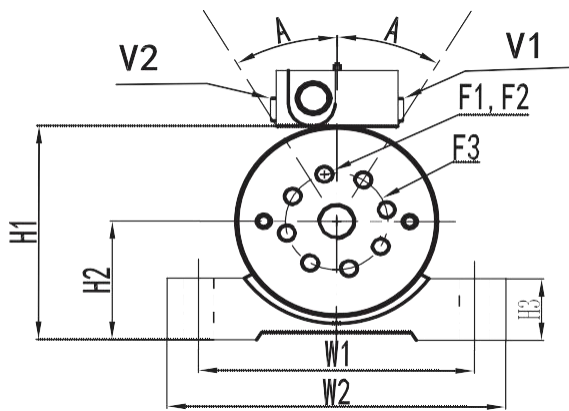
Performance parameters and dimensions of B series



DKX-B-280,450,580 Shaft flange



DKX-B-280,450,580 End cover



Model		50	95	180	280	300	450	580
Torque 210bar(Nm)	Driving	508	960	1690	2830	3150	4400	5870
	Holding	1300	2400	4400	7100	4480	10530	8040
Bending moment (Nm)	Straddle	2500	4500	1020	16400	18000	31600	18000
	Cantilever	1356	2485	5420	11300	6500	15820	6500
Load (KG)	Axial	500	680	1000	1410	1200	1770	4000
	Radial	1380	2130	4190	5580	4000	9530	4000
Displacement (cm ³)	180°	132	234	436	726	711	1077	1270
	360°	-	-	-	-	-	-	-
Weight (KG)	180°	12.2	16.8	29.9	51.3	47	76.7	50
	360°	-	-	-	-	-	-	-
Valve (optional)		Optional	Optional	Optional	Optional	Optional	Optional	Optional
		Optional	Optional	Optional	Optional	Optional	Optional	Optional

Note: The performance parameters and dimensions of the products in the table are for reference only.
The exact dimensions are subject to the final product drawings.

Performance parameters and dimensions of B series

Model		50	95	180	280	300	450	580
D1 Diameter of shaft flange and end cover flange (mm)		104	117	142	170	169	196	159
D2 Shell diameter (mm)		101	114	139	165	167	191	167
F1 Mounting holes of shaft flange	Metric	M10	M10	M12	M20	M12	M20	M12
	Depth	12.7	15.2	19.1	30	18	28	20
F2 Number of mounting holes of shaft flange (number)		6	8	8	8	8	10	12
F3 Bolt circle diameter of shaft flange (mm)		53.9	65	85	102	108	121	85
F4 Inner shaft through-hole size (mm)		M20	M24	M24	-	-	-	-
		Through hole	Through hole	Through hole	-	Through hole	-	-
F5 Mounting bolt size of bottom foot hole (mm)		M16	M20	M24	M24	M26	M30	M12
F6 Shaft center hole size		-	-	-	M25	-	M32	-
		-	-	-	25	-	2	-
F7 Mounting holes of end cover flange		-	-	-	M12	M12	M16	M12
		-	-	-	18	20	23	20
F8 Number of mounting holes of end cover flange		-	-	-	8	8	10	12
F9 Bolt circle diameter of end cover flange		-	-	-	108	86	121	85
H1 Overall height (excluding valve) (mm)		119	135	158	193	-	218	-
H2 Height from the center line (mm)		66	76.2	85.9	108	108	121	86
H3 Bottom foot height (mm)		34.3	38.1	44.5	63.5	48	70	34
H4 Overall height (including valve) (mm)		146	163	185	220	222	245	207
L1 Overall length (mm)	180°	188	216	248	298	298	337	398
	360°	-	-	-	-	-	-	-
L2 Non-rotating part, overall length (mm)	180°	173	197	229	276	258	314	356
	360°	-	-	-	-	-	-	-
L3 Distance between shaft flange and balance valve (mm)		32	35	45	49	-	49	-
L4 Mounting length (mm)	180°	111	140	152	184	184	216	250
	360°	-	-	-	-	-	-	-
L5 Distance between shaft flange and mounting holes (mm)		37.9	37.6	47	57	57	61	74
W1 Mounting width (mm)		145	152	197	222	222	267	128
W2 Overall width (mm)		178	191	248	279	270	330	159
P1, P2 Shell oil outlet	ISO-1179-1/BSPP 'G' series oil outlet, with a size of 1/8 to 1. See details in drawings.							
V1, V2 Valve oil outlet								

Note: The performance parameters and dimensions of the products in the table are for reference only.
The exact dimensions are subject to the final product drawings.